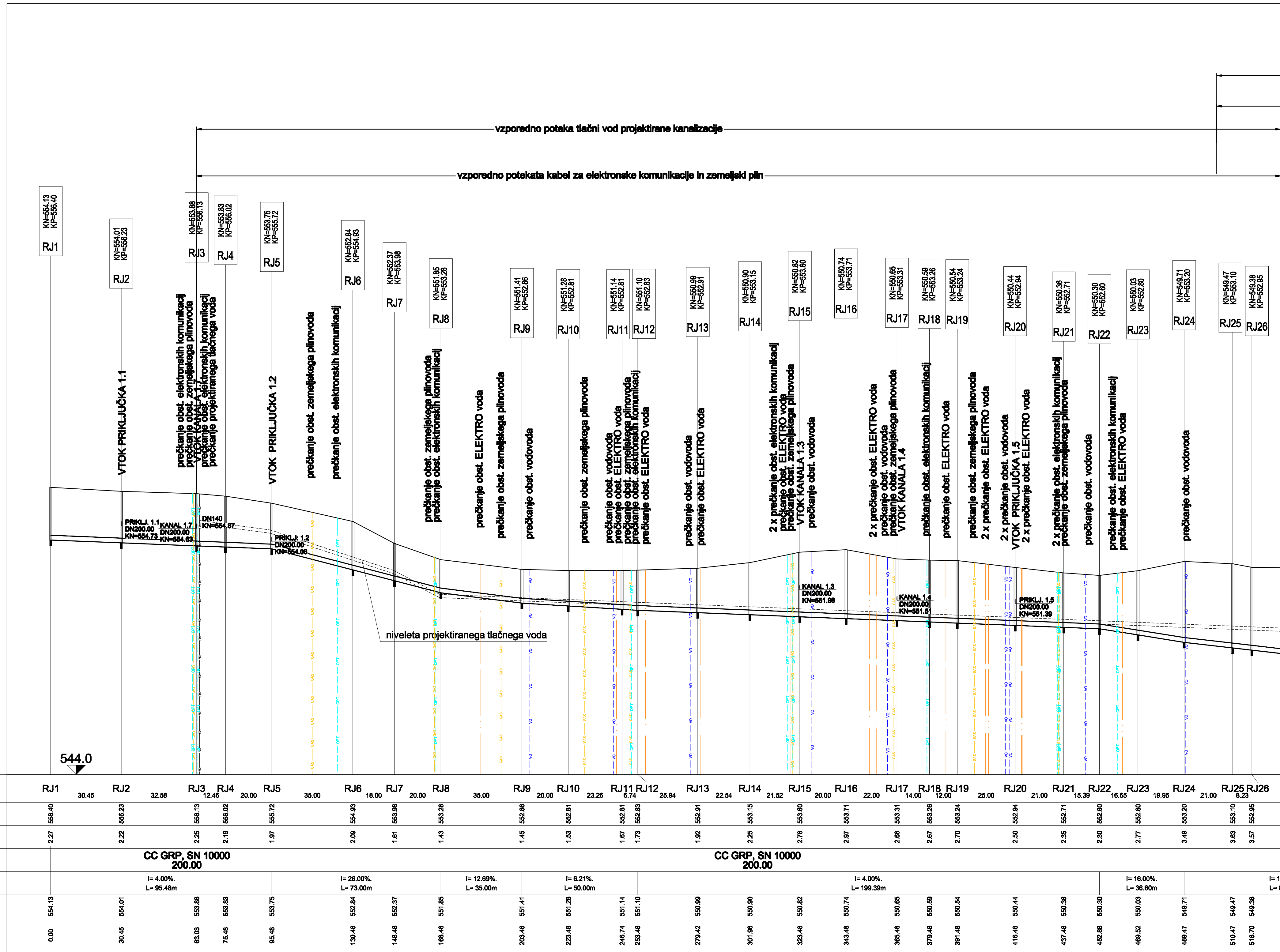
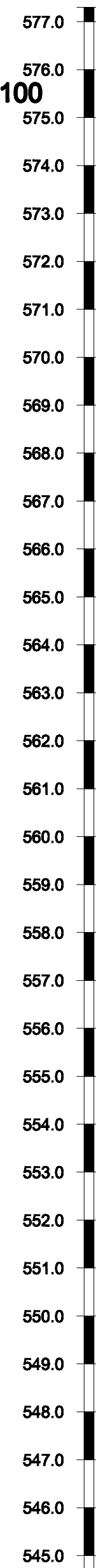


MERILO 1:1000/100



ŠT. JAŠKA IN RAZDALJA	RJ1	RJ2	RJ3	RJ4	RJ5	RJ6	RJ7	RJ8	RJ9	RJ10	RJ11	RJ12	RJ13	RJ14	RJ15	RJ16	RJ17	RJ18	RJ19	RJ20	RJ21	RJ22	RJ23	RJ24	RJ25	RJ26			
KOTA TERENA	566.40	566.23	566.13	566.02	565.72	564.93	563.98	563.28	562.86	562.81	562.81	562.83	562.81	563.15	563.80	563.71	563.31	563.28	563.24	562.94	562.71	562.60	562.80	563.20	563.10	562.95			
GLOBINA NIVELETE	2.27	2.22	2.25	2.19	1.97	2.09	1.61	1.43	1.45	1.53	1.67	1.73	1.62	2.25	2.78	2.97	2.86	2.87	2.70	2.50	2.35	2.30	2.77	3.49	3.63	3.57			
MATERIAL IN PROFIL CEVI	CC GRP, SN 10000 200.00										CC GRP, SN 10000 200.00																		
PADEC	I= 4.00%, L= 95.48m					I= 26.00%, L= 73.00m			I= 12.69%, L= 35.00m					I= 6.21%, L= 50.00m					I= 4.00%, L= 199.39m					I= 16.00%, L= 36.60m					I= 1.00%, L= 1.00m
KOTE NIVELETE	554.13	554.01	553.88	553.83	553.75	552.84	552.37	551.85	551.41	551.28	551.14	551.10	550.99	550.90	550.82	550.74	550.65	550.59	550.54	550.44	550.36	550.30	550.03	548.71	548.47	548.38			
STACIONAŽA	0.00	30.45	63.03	75.48	95.48	130.48	148.48	168.48	203.48	223.48	248.74	253.48	279.42	301.98	323.48	343.48	365.48	379.48	391.48	418.48	437.48	452.88	469.52	489.47	510.47	518.70			

[illegible]